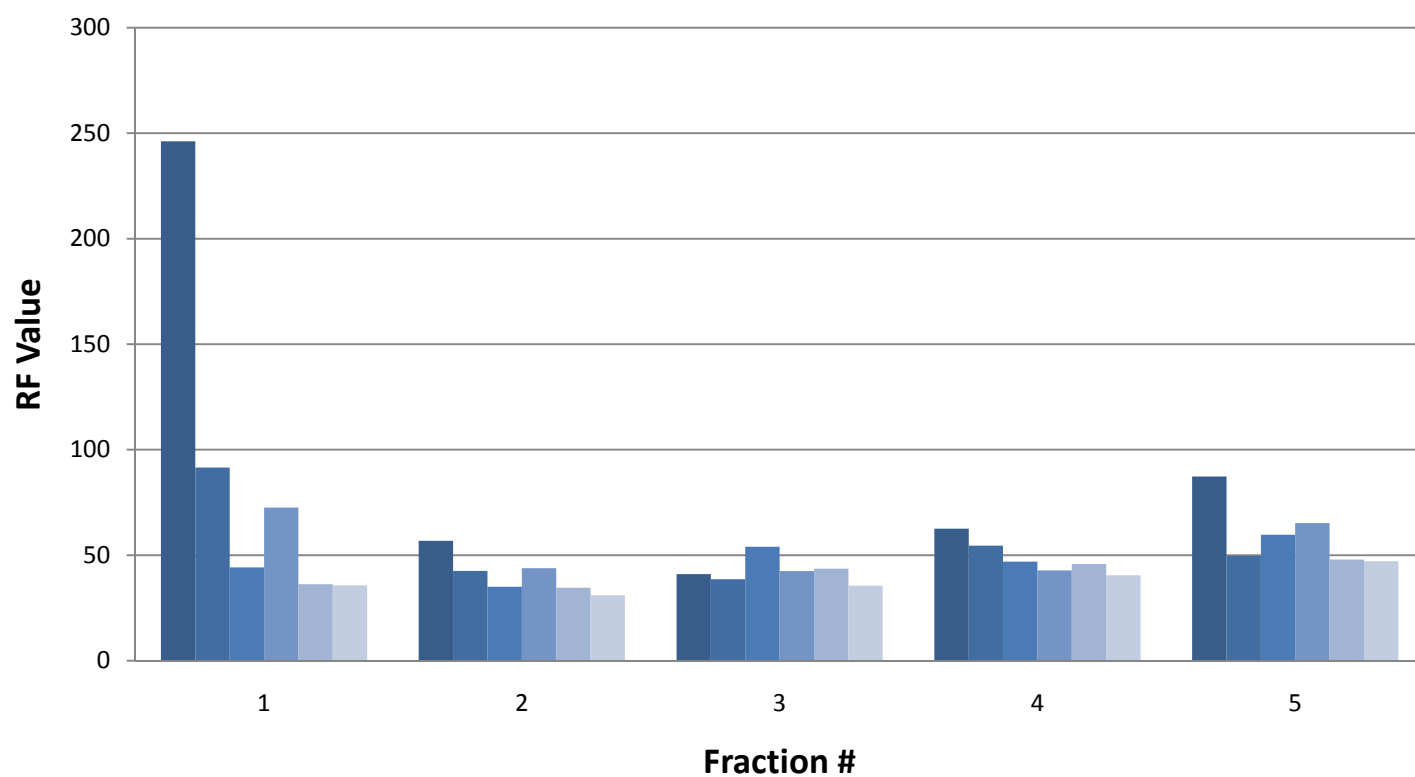


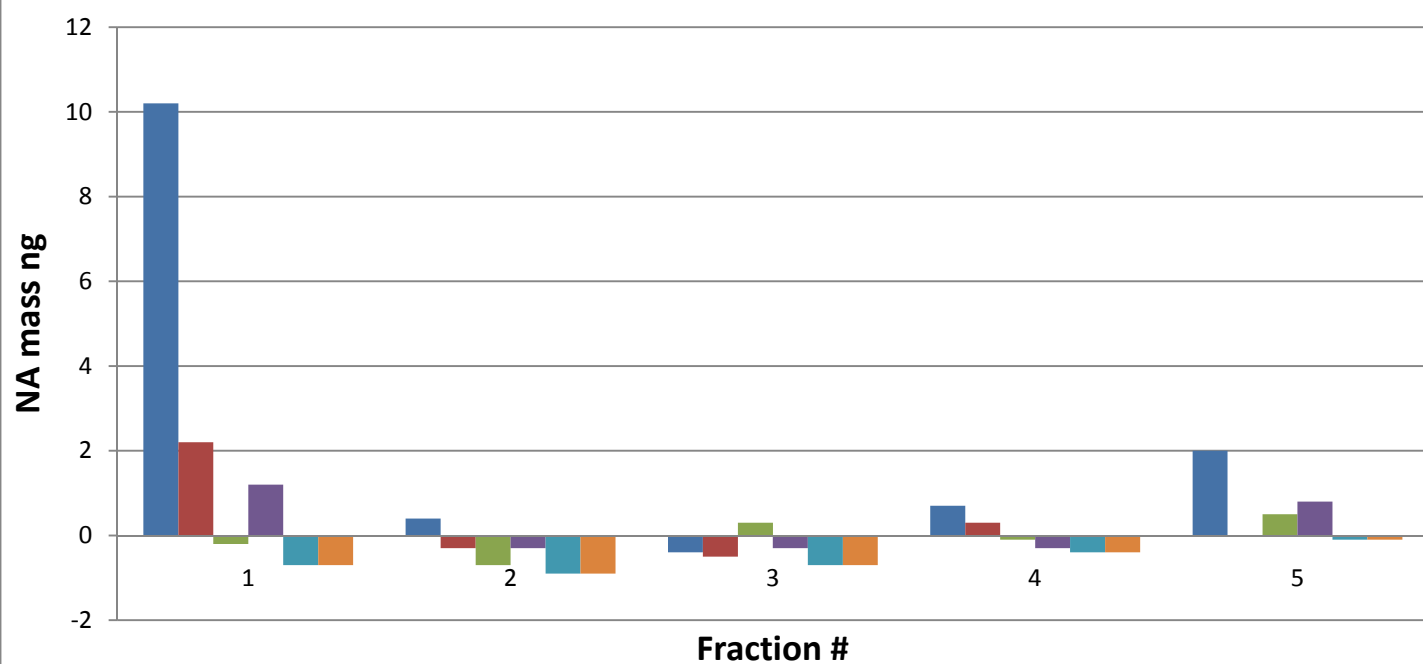
RF vs. fraction

1ml methanol → Dry → 500ul NFW → collect 6 fractions 50ul



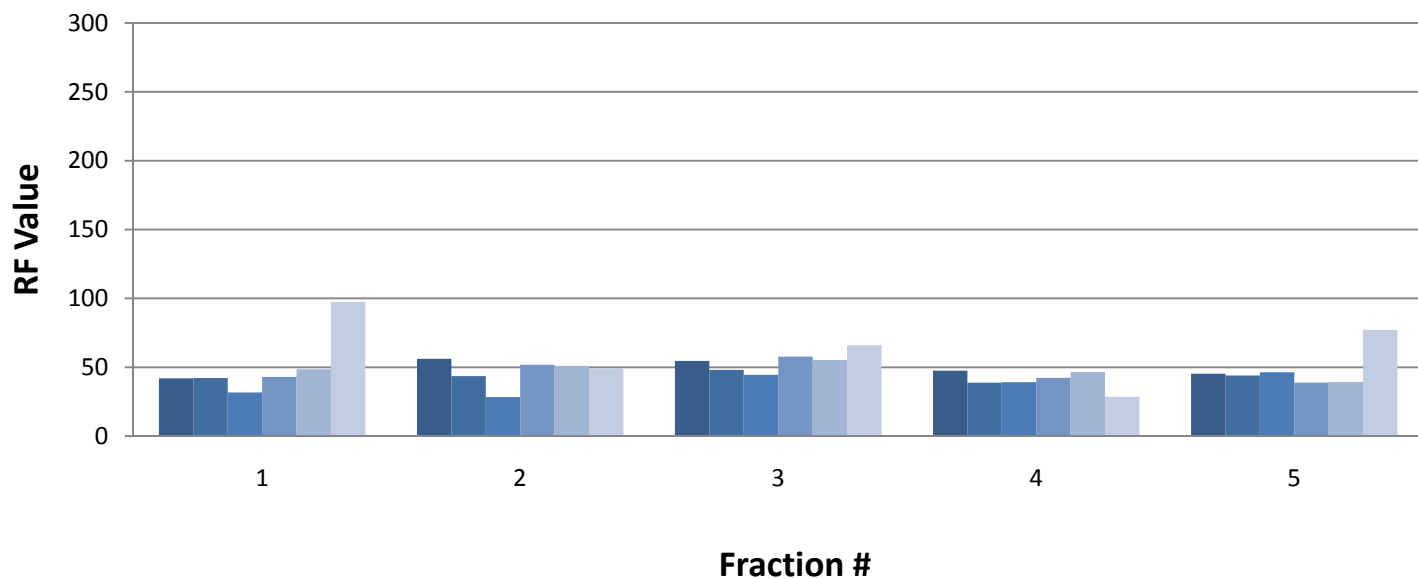
Corresponding NA mass vs Fraction

1ml methanol → Dry → 500ul NFW → collect 6 fractions 50ul



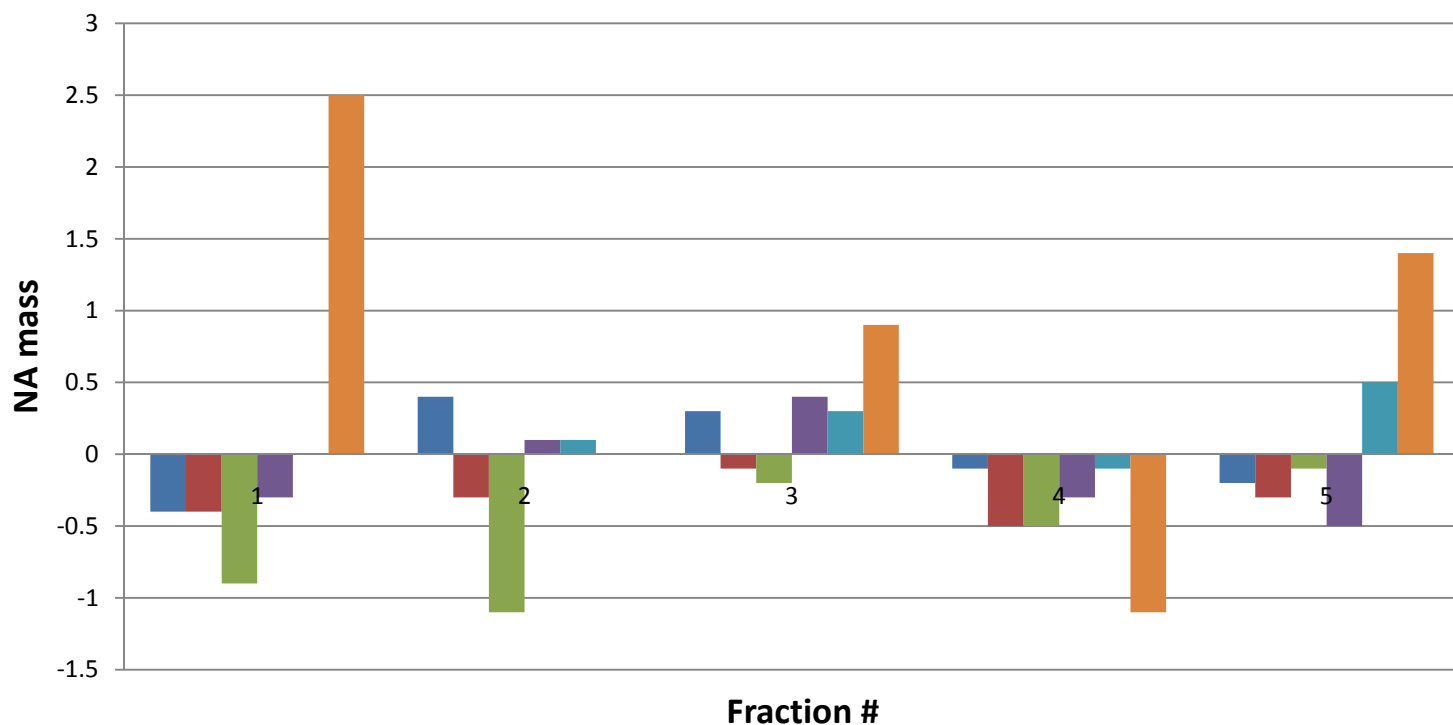
RF vs. fraction

1ml methanol → 300ul buffer → Dry → 500ul NFW → collect 6 fractions 50ul



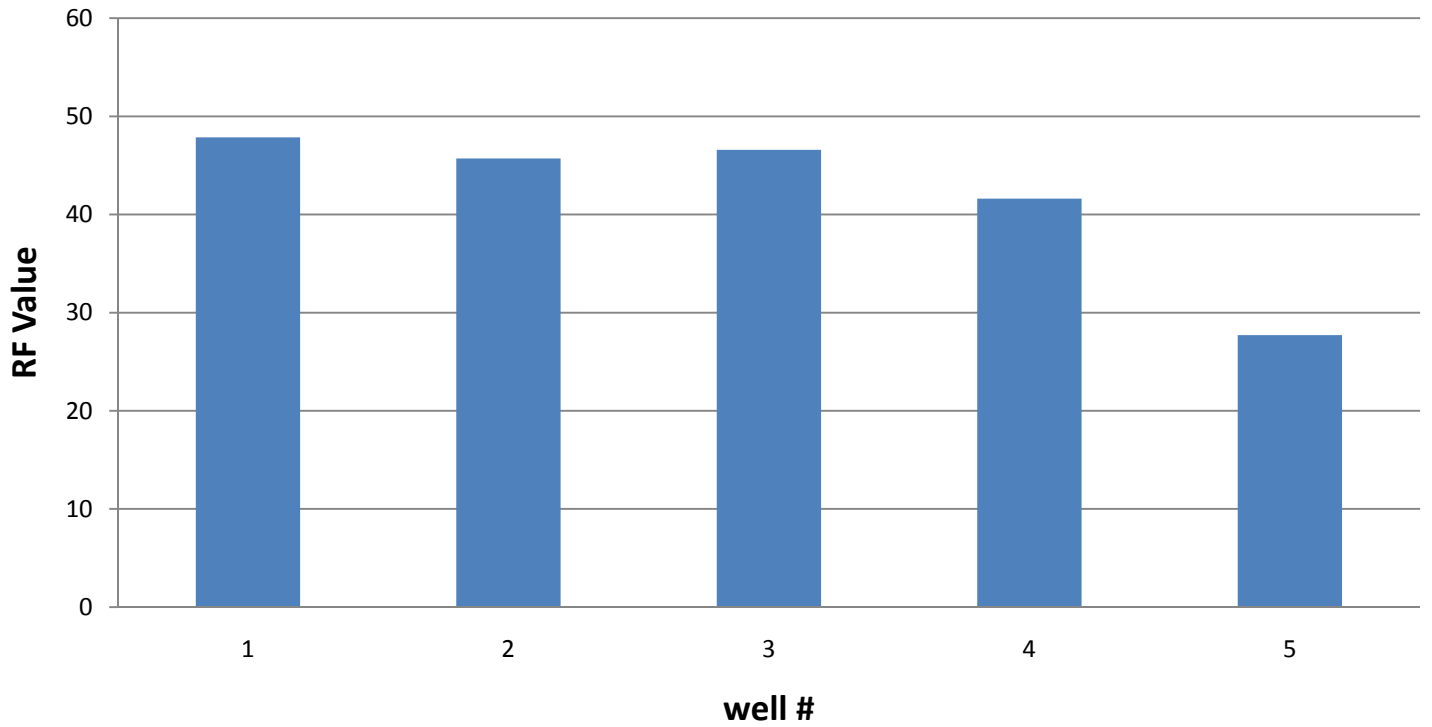
Corresponding NA mass vs Fraction

1ml methanol → 300ul buffer → Dry → 500ul NFW → collect 6 fractions 50ul



NF Water

RF vs well#



NF Water

corresponding NA mass vs well#

